

DecoFlex WireFree™ Surface 5 Channel Instructions

Item #:1871025 (White)

PRODUCT OVERVIEW

The DecoFlex WireFree Surface keypad provides homeowners with a simple and elegant way to control their Somfy-powered RTS shades. With a surface-mount capability and IP54 rating, it is ideal for interior and exterior applications.

CONTROL OPERATION

Status LEDs

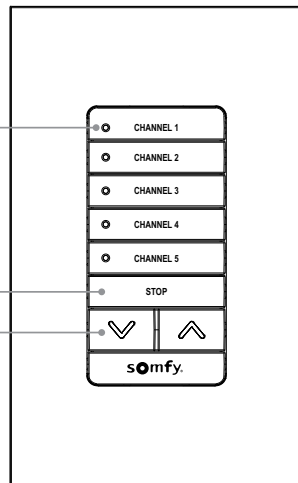
Press to select the channel(s) that you intend to control.

Stop

When the shades are moving, press to stop them at the desired level. When shades are stationary, press once to bring the shades to the favorite position.

Raise/Lower

Press to raise/lower shades to desired levels.



WHAT'S IN THE BOX

- DecoFlex WireFree™ Surface 5 Channel
- Instructions
- CR2430 battery (x1)
- Keypad assembly
- Mounting frame
- Mounting screws (x2)
- Screw anchors (x2)

IMPORTANT NOTES

Codes: Install in accordance with all local and National Electrical Codes.

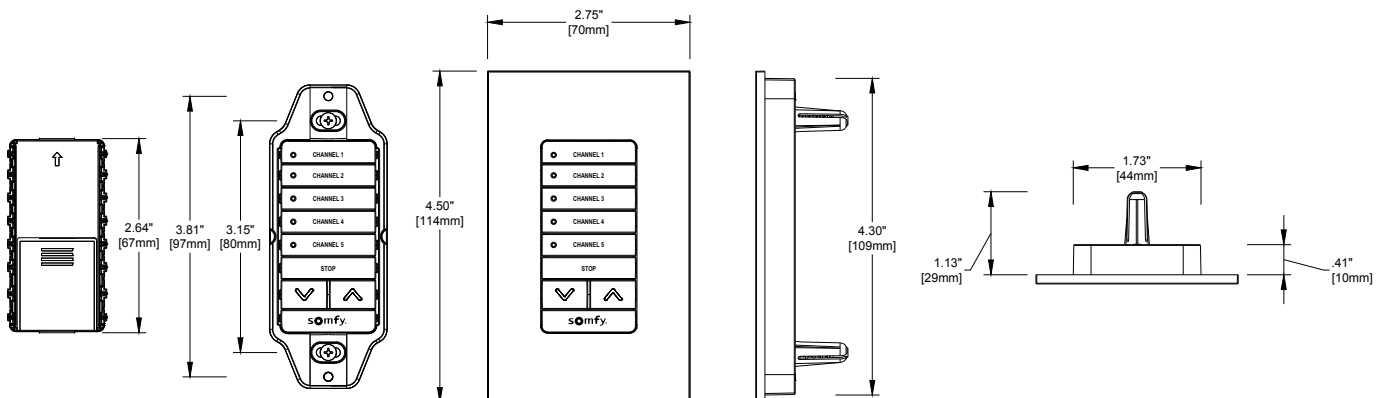
Environment: Ambient operating temperature: 4° F to 131° F (-20° C to 55° C), 0 to 90% humidity, non-condensing, IP54 rating.

Mounting: For optimal performance, DO NOT mount the control to a metal surface.

Battery: DO NOT use rechargeable batteries. Using improper batteries could damage the DecoFlex Surface keypad.

Cleaning: To clean, wipe with a clean damp cloth. Do not use any chemical cleaning solutions.

DIMENSIONS



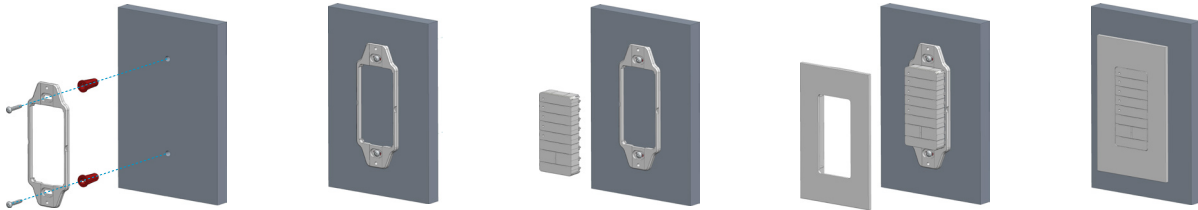
Somfy Flush-Mount Faceplate
(Faceplate included)

somfy®

INSTALLATION

The keypad can be surface-mounted with the following steps:

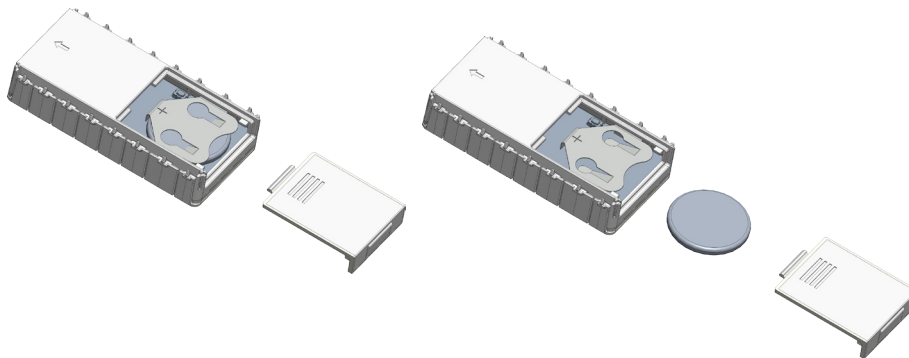
1. Drill two 3/16" holes using the mounting frame as a guide.
2. Install the frame using the anchors and screws provided.
3. Push the keypad module until you hear a click.
4. Attach the Somfy wall plate on to the keypad.



BATTERY REPLACEMENT

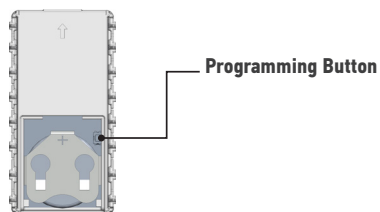
WARNING: Burn hazard. To avoid the risk of fire, explosion, or burns, DO NOT recharge, disassemble, crush, puncture, or incinerate the battery. Please recycle battery appropriately.

1. Remove the Somfy wall plate to access the keypad module.
2. Slide the battery door off and remove the battery from the holder.
3. Remove the existing battery and replace with a new CR 2430 battery, positive (+) side up. Slide the battery door back into the keypad module and reinstall it with the wall plate.



PROGRAMMING

For detailed steps on programming, please refer to the pocket programming guide at www.somfypro.com/pocket-programming-guide



FCC/IC INFORMATION

FCC/IC Information

This device complies with part 15 of the FCC Rules and Industry Canada license-exempt RSS standard(s). Operation is subject to the following two conditions:

- (1) This device may not cause interference, and
- (2) this device must accept any interference, including interference that may cause undesired operation.

SOMFY SYSTEMS INC
121 Herrod Blvd.
Dayton, NJ 08810
Phone: (800) 22-SOMFY
NJ: (609) 395-1300
Fax: (609) 495-8118
somfypro.com

Florida
1200 SW 35th Ave.
Boynton Beach, FL 33426
Phone: (877) 227-6639
Fax: (561) 995-7502

California
15301 Barranca Parkway
Irvine, CA 92618-2201
Phone: (877) 727-6639
Fax: (949) 727-3775

SOMFY ULC
SOMFY Canada Division
6411 Edwards Blvd
Mississauga, ON L5T 2P7
CN: (905) 564-6446
Fax: (905) 238-1491
somfypro.ca

somfy[®]

© Somfy Systems, Inc. 10/2022