

Part Number:  
1870579

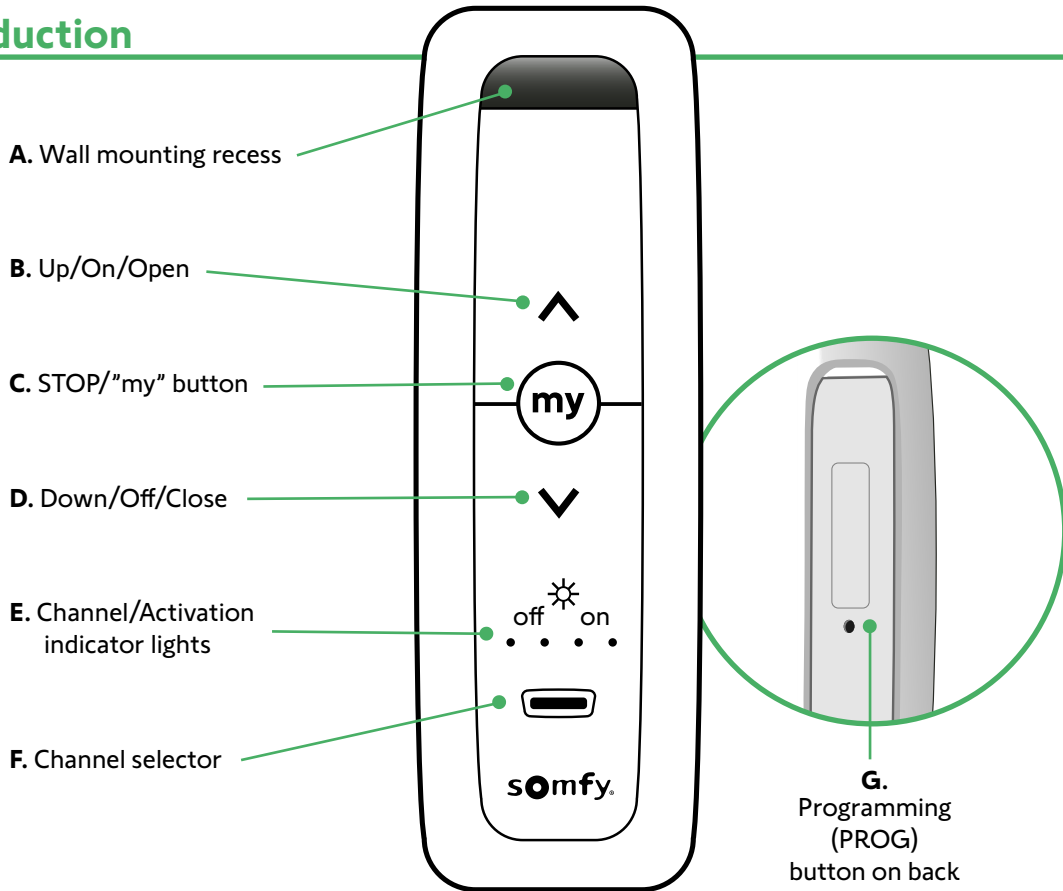
# Situo<sup>®</sup> 5 Soliris<sup>®</sup> RTS

The Situo 5 Soliris RTS remote control operates up to five individual or five groups of window coverings. Situo 5 Soliris RTS remote control also activates or deactivates the automatic sunlight setting for window coverings, awnings, screens, pergolas and rolling shutters.

Situo 5 Soliris RTS

## 1

### Introduction



## 2

## Programming & Pairing

Before operating, ensure that the remote control included with the original motorized window covering/application is programmed before adding the Soliris remote control. If this is the original remote, you will need to follow the initial programming instructions in section titled Original Remote Programming below.

To program the automatic sunlight feature, window coverings must be paired with the Situo 5 Soliris RTS group 5.

The Situo 5 Soliris RTS controls five individual or five groups of window coverings. To select a window covering or group, press the Channel Selector Button. LED lights designate each channel. All LEDs are lit when channel 5 is chosen.

### Original Remote Programming

- Please ensure motorized shades are connected to power.



**Note:** While programming, the motor should not be inactive for more than 2 minutes or it will exit programming mode.

- On the transmitter, PRESS & HOLD both the UP and DOWN buttons simultaneously until the motorized window covering moves slightly.
- Next, PRESS & HOLD the DOWN button. The motorized window covering should go down.

#### SETTING the UPPER LIMIT:

Bring the window covering to desired UPPER limit position.

#### SETTING the UPPER LIMIT:

PRESS & HOLD both MY/STOP and DOWN simultaneously until the application starts to move, then release. If the window covering stops when the buttons are released, take it back to the UPPER limit and repeat.

#### SETTING the UPPER LIMIT:

Stop the motorized window covering when desired LOWER limit is reached. Adjust by pressing UP or DOWN if necessary.

#### SETTING the LOWER LIMIT:

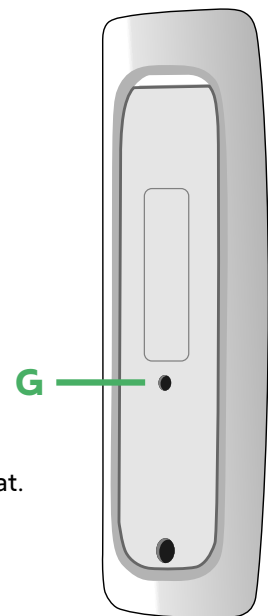
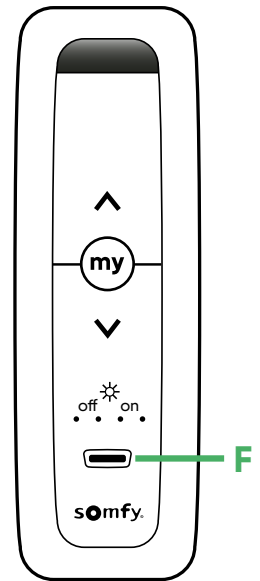
PRESS & HOLD both MY/STOP and UP simultaneously until the window covering starts to move, then release. The window covering will stop at the previously set UPPER limit.

#### CONFIRMING LIMIT SETTINGS:

PRESS & HOLD MY/STOP until the motorized window covering moves slightly, confirming the limit settings.

#### COMPLETE PROGRAMMING:

BRIEFLY PRESS the PROGRAMMING BUTTON (G) on the back of the transmitter. The window covering moves and is now in USER MODE. In user mode, the motorized window covering will operate by briefly pressing the UP or DOWN (maintained fashion).



### Adding/Deleting a Situo 5 Soliris RTS

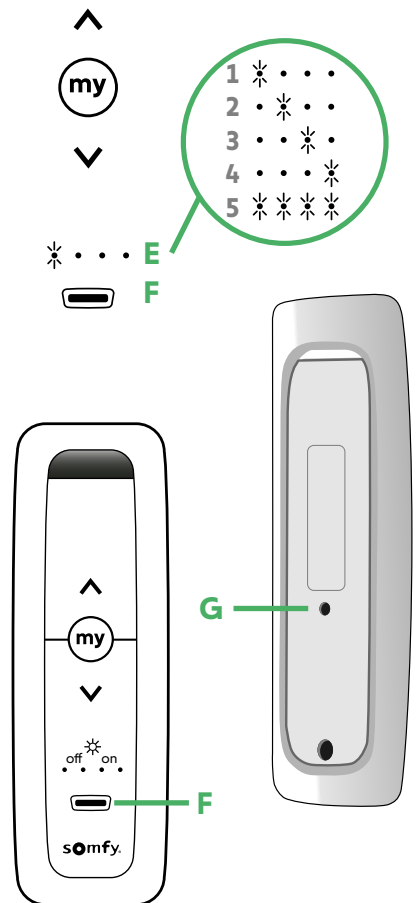
To add or delete from a window covering:

- Press and hold the (G) Programming Button (PROG) on back of previously programmed remote control until window covering briefly extends and retracts.
- Using the Situo 5 Soliris RTS remote, select the desired channel using the (F) Channel Selector Button. (Press the channel button repeatedly until the LED light designates the desired channel)
- Press the (G) Programming Button (PROG) on the Situo 5 Soliris RTS II remote until the motorized window covering briefly extends and retracts. The RTS motorized window covering is now assigned to a group on the new remote. To add more window coverings to this group, repeat this process.

### Selecting groups on Situo 5 Soliris RTS

- Before using the Situo 5 Soliris RTS remote control, check that the correct channel has been selected.
- Briefly press the channel selector (F): selected channel displayed. Press several times to change the selected channel.
- The indicator light (E) for each channel from 1 to 4 is lit individually. Channel 5 is designated when all indicator lights glow simultaneously.

Soliris 5 RTS



# 3

## Operation

Before using the Situo 5 Soliris RTS, check that the correct channel has been selected.

### Arrow Buttons (B & D)

Depending on the type of window covering controlled by the remote:

- Briefly pressing ( ^ ) to raise/open or ( v ) to lower/close
- Pressing and holding ( ^ ) to Increase light intensity or ( v ) to Reduce light intensity

### Stop button/"my" (C)

- Briefly press the "my" button to stop the operation of the window covering.
- If the window covering is off, briefly press my to activate it until it reaches the programmed position "my".

Programming, modifying or deleting a preset position "my"

- Place the window covering in a desired position then press "my" up to five times to program the preferred position "my".
- To delete a programmed position, place the window covering in the programmed position "my" and press "my" up to five times to delete it.

### Activating/Deactivating the automatic sunlight device

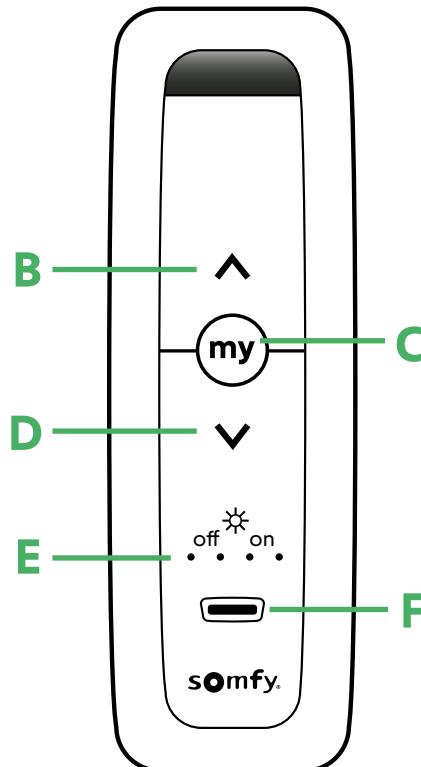
For Situo 5 Soliris RTS, select channel 5.

- To find out whether the automatic sunlight device is activated or deactivated, press the (F) button until the (E) indicators lights are displayed.

On indicator light = activated

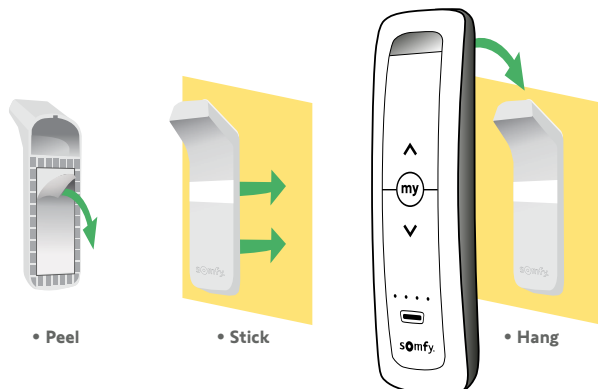
Off indicator light = deactivated.

- To activate or deactivate the automatic device, press and hold the (F) button until the (E) indicator light change status.



Continued On Next Page

## 4 Wall Mounting

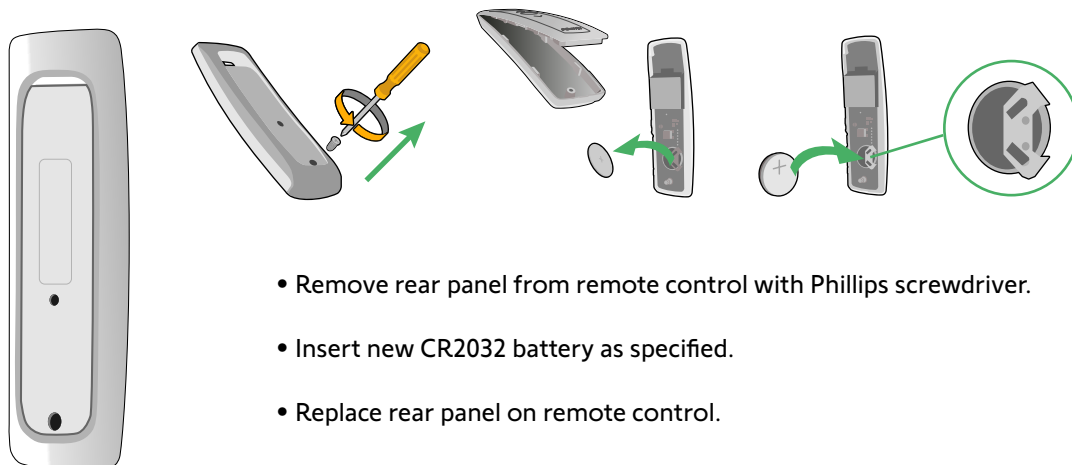


Using the included Mounting Bracket:

- Peel the protective film from the adhesive on the back of the mounting bracket.
- Stick the wall mounting to a flat, clean, and dry surface (press firmly).
- Hang the Situo 5 on the mounting bracket.

## 5 Battery Replacement

Battery compartment located on back



- Remove rear panel from remote control with Phillips screwdriver.
- Insert new CR2032 battery as specified.
- Replace rear panel on remote control.



**Note:** Visit <https://store.somfysystems.com/> to purchase an additional or replacement product.



**BATTERY RECYCLING OR DISPOSAL**  
Discard batteries and electrical components following local codes or regulations. Recycle batteries and electrical components with designated electronic recycle centers.



This product is intended for indoor use only. Please keep out of reach of children. Avoid damaging product by dropping or using undo force. Do not expose product to open flame, heat, or moisture.

This device is FCC certified and complies with part 15 of the FCC rules. RTS compatibility: RTS transmitters are capable of operating any RTS motor.