

FlexShade® Interior Cable Guides

INSTRUCTIONS INSTALLATION & OPERATION

Section 1 - Components Provided

Brackets Only Installation

Loop Mounting Hardware



Double Sleeve (crimp)



25ft (7.62m) Non-Coated Steel Cable



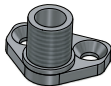
Tension Stop



Single Sleeve (crimp)



Deck or Wall Mounting Plate (Deck Mount Shown)



Fascia Installation Small Endcap

Top Mounting Hardware



25ft (7.62m) Non-Coated Steel Cable



Tension Stop



Single Sleeve (crimp)



Deck or Wall Mounting Plate (Wall Mount Shown)



Fascia Installation Large Endcap

Top Mounting Hardware



Single Sleeve (crimp)



25ft (7.62m) Non-Coated Steel Cable



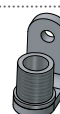
Tension Stop



Single Sleeve (crimp)



Deck or Wall Mounting Plate (Wall Mount Shown)



TOOLS REQUIRED



PENCIL



POWER DRILL



TAPE MEASURE



HARDWARE (by others)



CRIMPING TOOL

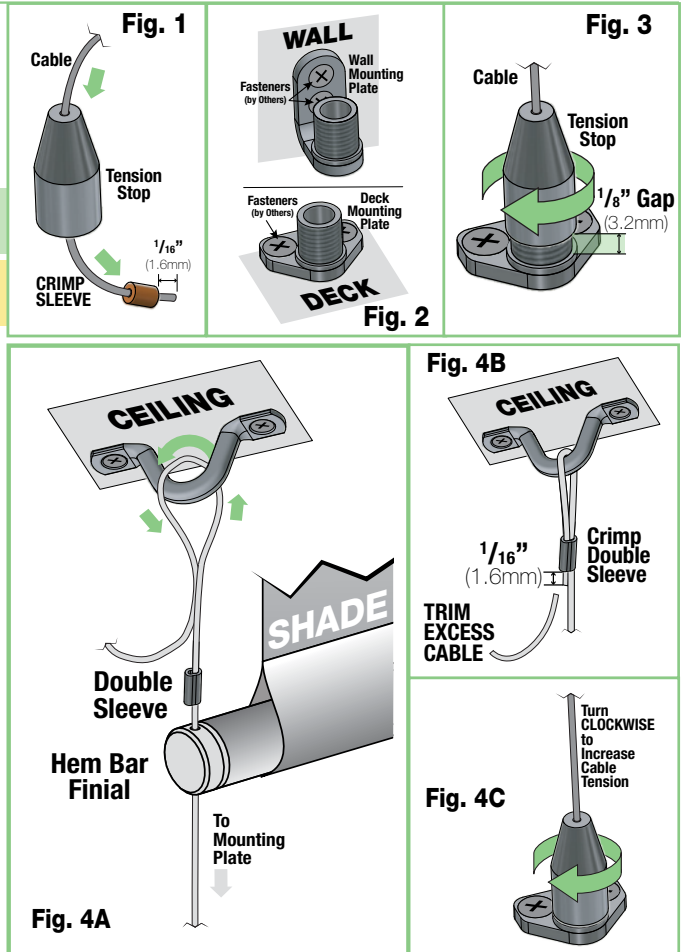
Section 2 - Brackets Only Installation

1. Slide TENSION STOP (tapered end up) onto cable (see Fig.1).
2. Slide SINGLE SLEEVE onto cable, leaving 1/16" (1.6mm) from end and crimp (Fig. 1).
3. Attach WALL OR DECK MOUNTING PLATE to mounting surface using appropriate hardware (by others) (see Fig 2).

Please Note: The installer is responsible for selecting mounting hardware appropriate for site conditions.

⚠ Caution: Before mounting shades, verify measurements on the card provided with shade, and ensure brackets are installed at the correct width.

4. Temporarily screw TENSION STOP to MOUNTING PLATE to hold cable into place. Be sure to leave a 1/8" (3.2mm) gap between TENSION STOP and MOUNTING PLATE.
5. Attach LOOP MOUNT to ceiling loosely (see Fig. 4A). The two (2) screws will be tightened in step 11.
6. Feed cable through HEM BAR FINIAL (see Fig. 4A).
7. Feed DOUBLE SLEEVE onto cable (see Fig. 4A).
8. Feed cable through LOOP MOUNT and make a slight crimp in center of LOOP MOUNT (see Fig. 4A).
9. Slip end of cable through the other hole in DOUBLE SLEEVE (creating a loop) and crimp (see Fig. 4B).
10. Trim excess cable 1/16" (1.6mm) below the crimp (see Fig. 4B).
11. Tighten the two (2) screws on LOOP MOUNT and two (2) screws on MOUNTING PLATE.
12. Cable should now be taut. Turn TENSION STOP clockwise to adjust cable tension (see Fig. 4C).

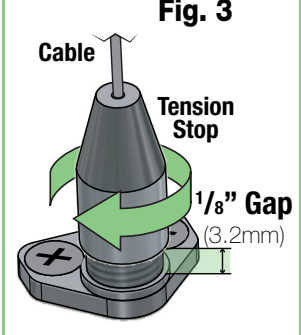
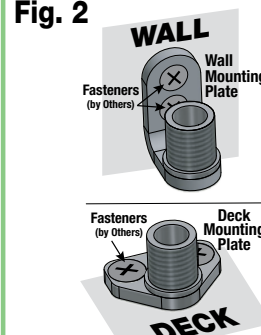
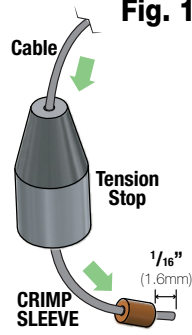


Section 3 - Endcaps with Fascia

1. Slide TENSION STOP (tapered end up) onto cable (see Fig.1).
2. Slide SINGLE SLEEVE onto cable leaving $\frac{1}{16}$ " (1.6mm) from the end and crimp (see Fig. 1).
3. Attach WALL OR DECK MOUNTING PLATE to mounting surface using appropriate hardware (by others) (see Fig 2).

Please Note: The installer is responsible for selecting mounting hardware appropriate for site conditions.

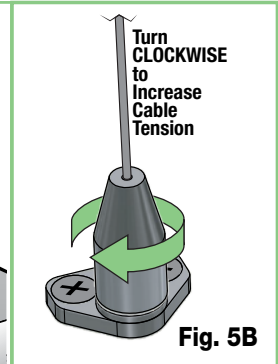
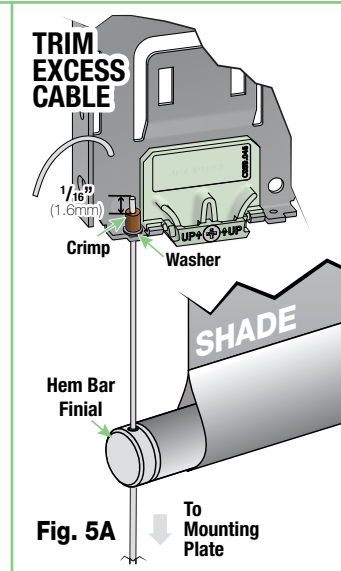
⚠ Caution: Before mounting shades, verify measurements on the card provided with shade, and ensure endcaps are installed at the correct width.



4. Temporarily screw TENSION STOP to MOUNTING PLATE to hold cable into place. Be sure to leave a $\frac{1}{8}$ " (3.2mm) gap between TENSION STOP and MOUNTING PLATE (see Fig 2).

FOR SMALL ENDCAPS WITH FASCIA (SEE FIG. 5):

5. Slide cable through HEM BAR FINIAL (see Fig. 5A).
6. Slide CRIMP onto cable (see Fig. 5A).
7. Feed cable through provided hole in the bottom of endcap (see Fig. 5A).
8. Slide provided WASHER and CRIMP onto the cable and secure crimp at appropriate length.
9. Trim excess cable $\frac{1}{16}$ " (1.6mm) above the CRIMP (see Fig. 5A).
10. Tighten two (2) screws on MOUNTING PLATE (see Fig. 5B).
11. Cable should now be taut. Turn TENSION STOP clockwise by hand to adjust cable tension (see Fig. 5B).



FOR LARGE ENDCAPS WITH FASCIA (SEE FIG. 6):

5. Attach LARGE FASCIA CABLE MOUNT to the inside of FASCIA ENDCAP and secure with provided hardware (see Fig. 6A).
- Please Note:** There is an alternate fastener location for use depending on site conditions.
6. Feed cable through HEM BAR FINIAL (see Fig. 6A).
 7. Feed cable through provided hole in CABLE MOUNT (see Fig. 6A).
 8. Slide provided WASHER and CRIMP onto the cable and secure CRIMP at appropriate length.
 9. Trim excess cable $\frac{1}{16}$ " (1.6mm) below crimp (see Fig. 6B).
 11. Tighten the two (2) screws on LOOP MOUNT and two (2) screws ON MOUNTING PLATE.
 12. Cable should now be taut. Turn TENSION STOP clockwise by hand to adjust cable tension (see Fig. 6C).

